

SHOT 180

Outdoor Floodlight



DESCRIPTION

SHOT 180 is one model in a family of four outdoor floodlights of varying sizes and outputs. It is suitable for illumination of architectural elements such as facades or sculptures and areas such as public squares and similar area lighting applications including streets in pedestrian-oriented settings. The floodlight features a mounting yoke for vertical and horizontal adjustability.

SHOT 180 features two output packages (Standard or High Output) with a choice of three light distributions in 3000K, 3500K, or 4000K color temperatures. Available distributions are rotationally symmetric Spot (11°) or Medium Flood (24°) beams or an asymmetric street distribution. Control options include 0-10V Dimming or On/Off.



Date: _____ Type: _____ Catalog Number: _____

Project Name: _____

ORDERING INFORMATION

LUMINAIRE						
MODEL	OUTPUT	CCT	CONTROL	VOLTAGE	OPTIC	FINISH
SHT180 Shot 180	SO Standard Output	30K 3000K	ON-OFF On/Off	UNV 120-277v	SP Spot 11°	AG Anthracite Grey
	HO High Output	35K 3500K	DIM 0-10v Dimming		MB Medium 24°	GR Grey
		40K 4000K			ST Street	CC Custom RAL Color

Custom options are available; consult factory via phone at (864) 487-3535 ext. 258 or via email at DesignServices@EXP-Brands.com.

See Page 7 for ordering information of available accessories.



Shot 80



Shot 180



Shot 290



Shot 380

SHOT 180

Outdoor Floodlight



SHOT 180		
PHYSICAL	HOUSING	Die-Cast Aluminum
	LENS	Tempered Glass
	HARDWARE	Stainless Steel
	MOUNTING	Surface or Pole Mount (See Page 7 for available mounting accessories.)
	DRIVER LOCATION	Integral
	DIMENSIONS	9.6" x 7.11" x 12.2"
	WEIGHT	14.4 Pounds
	OPERATING TEMPERATURE	-4°F to 122°F (-20°C to 50°C)
	EPA	0.56ft ²

		STANDARD OUTPUT	HIGH OUTPUT
ELECTRICAL	POWER CONSUMPTION	41 Watts	61 Watts
	CURRENT	0.34 amps at 120 volts 0.15 amps at 277 volts	0.51 amps at 120 volts 0.22 amps at 277 volts
	VOLTAGE	120 to 277 Volts	
	CONTROL	On/Off, 0-10v Dimming	
	FREQUENCY	50 to 60 Hz	

PHOTOMETRIC	LED	Static White 3000K, 3500K, or 4000K
	DISTRIBUTIONS	11°, 24°, Street Distribution
	LUMEN MAINTENANCE	L80 > 60,000 Hours at 77°F*
	CRI	80 CRI
	BUG RATING	B0-U0-G0
	LIGHT CONTROL ACCESSORIES	Snoot Available

LIGHT DISTRIBUTIONS	DISTRIBUTION	BEAM ANGLE	STANDARD OUTPUT			HIGH OUTPUT		
			LUMENS	EFFICACY	MAX. CANDELA	LUMENS	EFFICACY	MAX. CANDELA
			3000K					
Values based on full output.	SPOT	11°	4127	100.7	61598	5419	88.5	83773
	MEDIUM	24°	4112	100.3	19319	5396	88.2	25351
	STREET	-	3850	93.9	1661	5050	82.5	2188

CERTIFICATIONS	SAFETY	CSA Certification
	INGRESS PROTECTION	IP65
	IMPACT RATING	IK05
	WARRANTY	Five Year Limited Warranty

* LED life may vary under actual field conditions due to external factors. Lifetime estimates are generated from actual testing in a controlled environment. Values are conservatively derived from those numbers.

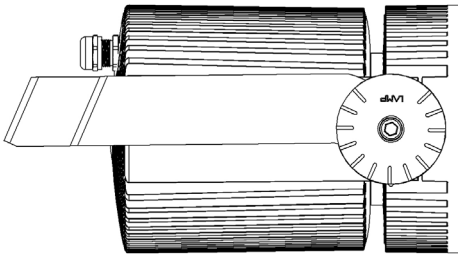
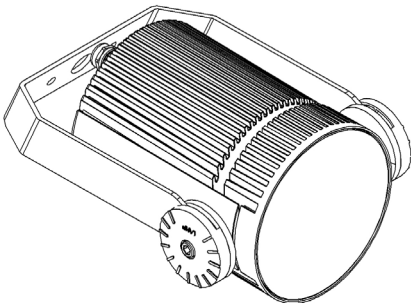
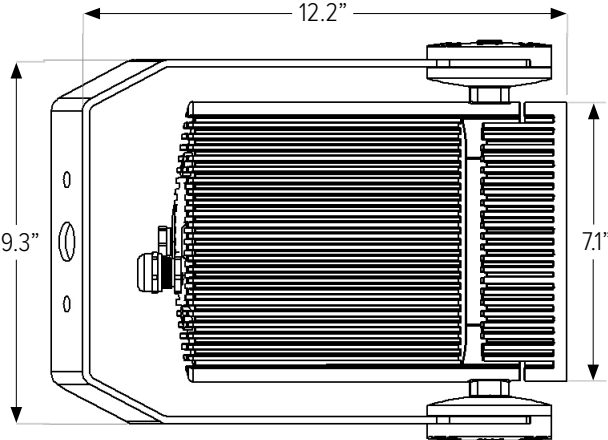
SHOT 180

Outdoor Floodlight



DIMENSIONS

All dimensions are shown in inches unless otherwise noted.

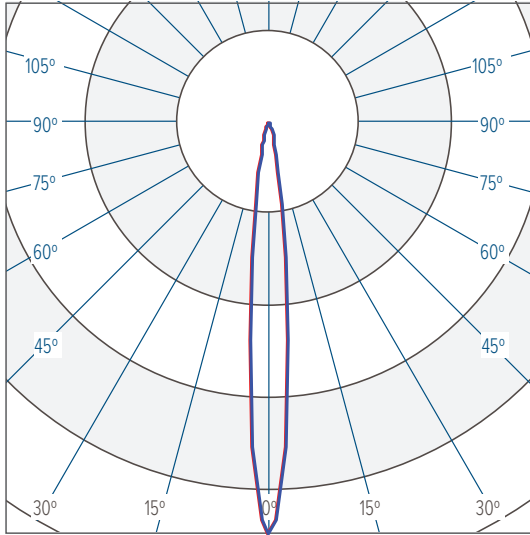


PHOTOMETRICS- SPOT BEAM (11°)

3000K Standard Output

CBCP 61598 @ 4127 lumens

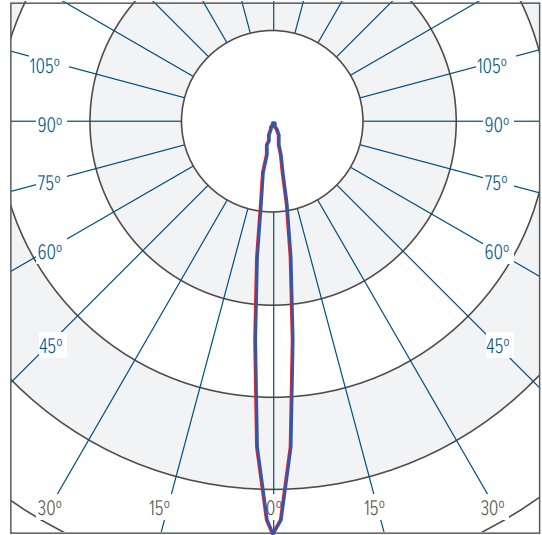
Horizontal
Vertical



4000K Standard Output

CBCP 61598 @ 4127 lumens

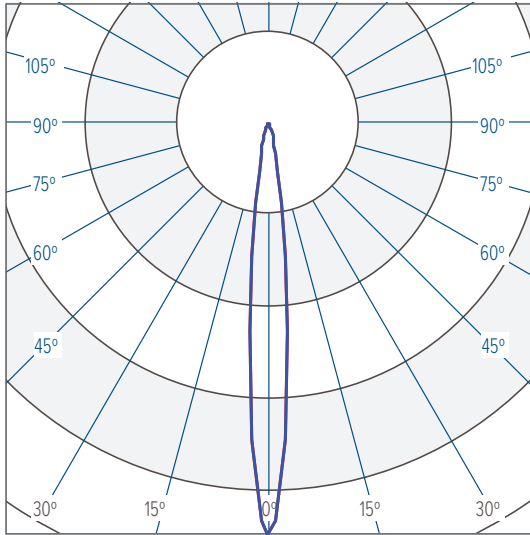
Horizontal
Vertical



3000K High Output

CBCP 83773 @ 5419 lumens

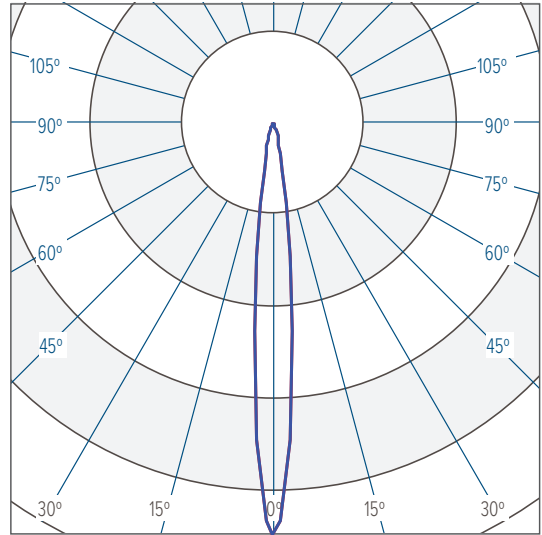
Horizontal
Vertical



4000K High Output

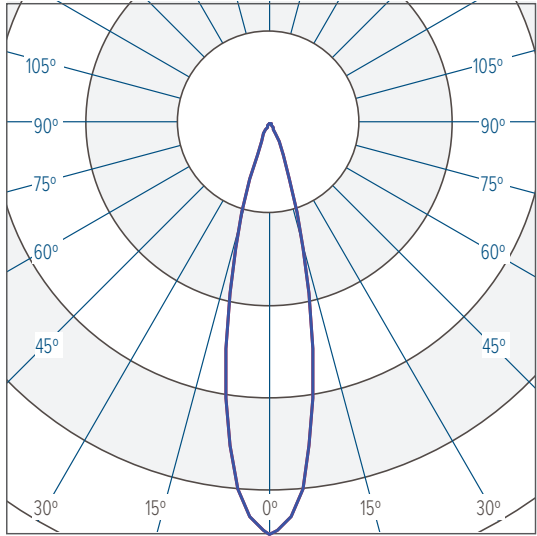
CBCP 83773 @ 5419 lumens

Horizontal
Vertical

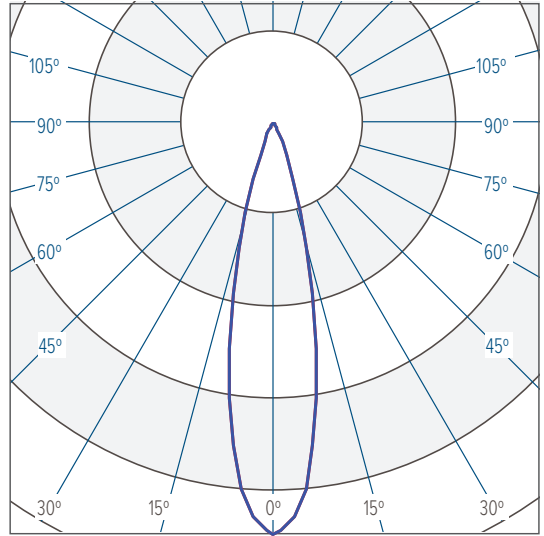


PHOTOMETRICS- MEDIUM BEAM (24°)

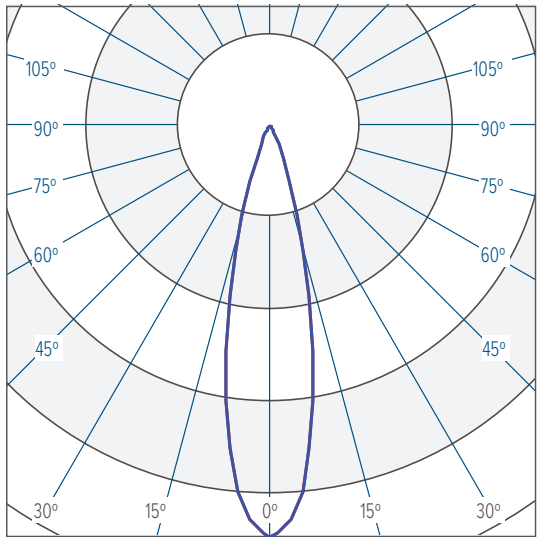
3000K Standard Output
CBCP 19319 @ 4112 lumens



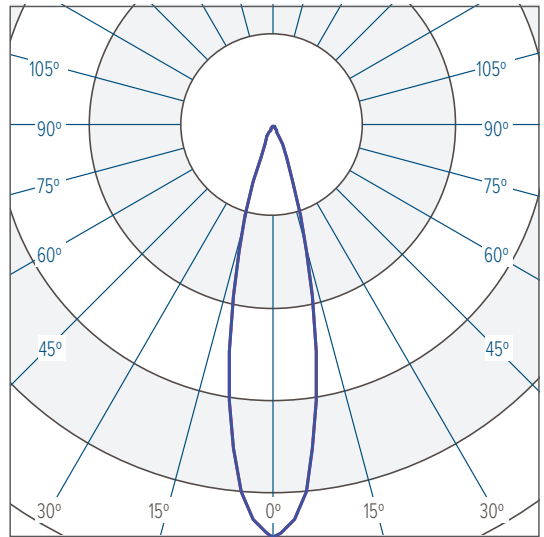
4000K Standard Output
CBCP 19319 @ 4112 lumens



3000K High Output
CBCP 25351 @ 5396 lumens

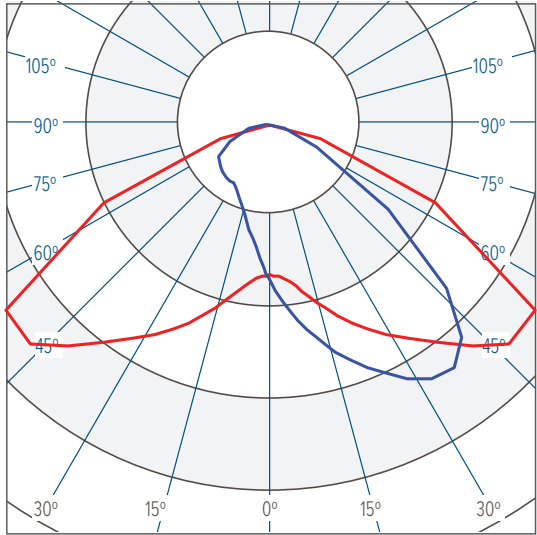


4000K High Output
CBCP 25351 @ 5396 lumens

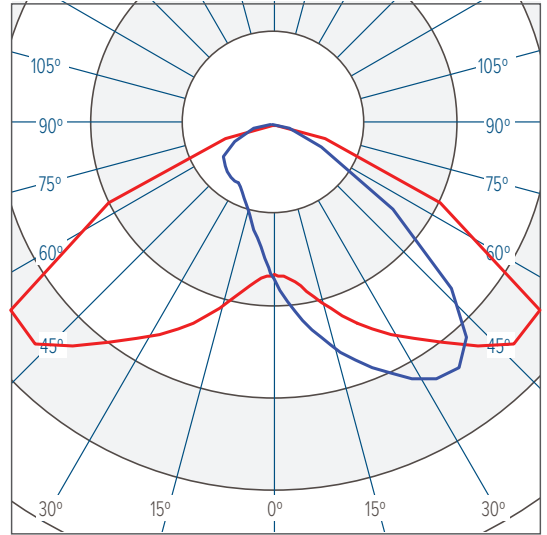


PHOTOMETRICS- STREET DISTRIBUTION

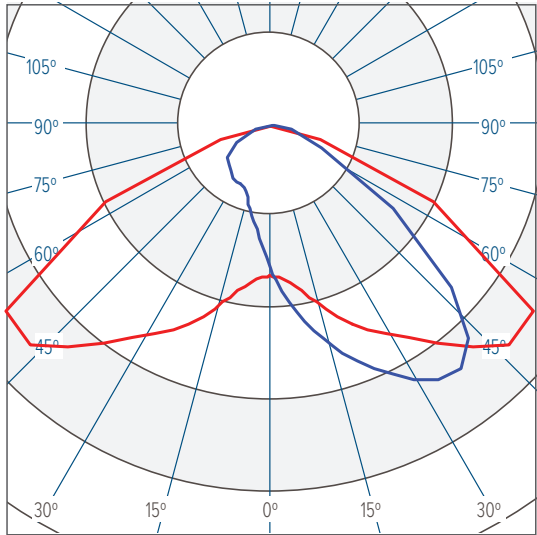
3000K Standard Output
CBCP 1661 @ 3850 lumens



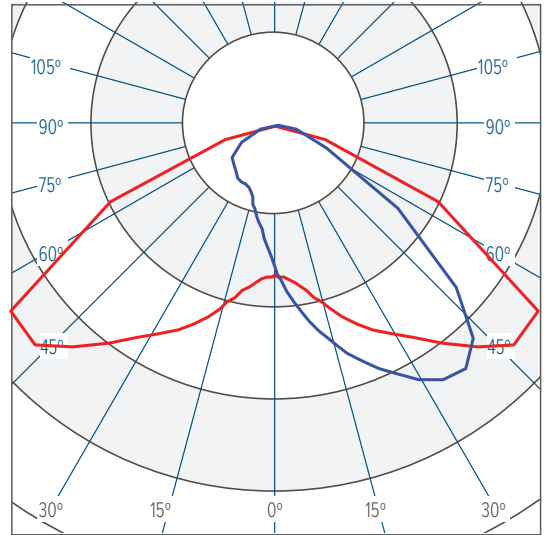
4000K Standard Output
CBCP 1661 @ 3850 lumens



3000K High Output
CBCP 2188 @ 5050 lumens



4000K High Output
CBCP 2188 @ 5050 lumens



MOUNTING ACCESSORIES

-XX* indicates a painted accessory. Select "AG" for Anthracite or "GR" for Grey. Custom RAL colors are available on request.

POST-TOP MOUNTING

SHORT MOUNTING BRACKET

SINGLE LUMINAIRE MOUNTING



SHT-SHRT-TOP-1LUM-2.36IN-XX*

Shot 180/290/380 Short Pole Top Mount
Single Luminaire
Fits ø2.36" Tenon
Anthracite or Grey Finish

SHT-SHRT-TOP-1LUM-3IN-XX*

Shot 180/290/380 Short Pole Top Mount
Single Luminaire
Fits ø3" Tenon
Anthracite or Grey Finish



SHT-LNG-TOP-1LUM-2.36IN-XX*

Shot 180/290/380 Long Pole Top Mount
Single Luminaire
Fits ø2.36" Tenon
Anthracite or Grey Finish

SHT-LNG-TOP-1LUM-3IN-XX*

Shot 180/290/380 Long Pole Top Mount
Single Luminaire
Fits ø3" Tenon
Anthracite or Grey Finish

LONG MOUNTING BRACKET

TWIN LUMINAIRE MOUNTING



SHT-SHRT-TOP-2LUM-2.36IN-XX*

Shot 180/290/380 Short Pole Top Mount
Twin Luminaires
Fits ø2.36" Tenon
Anthracite or Grey Finish

SHT-SHRT-TOP-2LUM-3IN-XX*

Shot 180/290/380 Short Pole Top Mount
Twin Luminaires
Fits ø3" Tenon
Anthracite or Grey Finish



SHT-LNG-TOP-2LUM-2.36IN-XX*

Shot 180/290/380 Long Pole Top Mount
Twin Luminaires
Fits ø2.36" Tenon
Anthracite or Grey Finish

SHT-LNG-TOP-2LUM-3IN-XX*

Shot 180/290/380 Long Pole Top Mount
Twin Luminaires
Fits ø3" Tenon
Anthracite or Grey Finish



Installation instructions available on request.

MOUNTING ACCESSORIES

-XX* indicates a painted accessory. Select "AG" for Anthracite or "GR" for Grey. Custom RAL colors are available on request.

INTERMEDIATE POLE MOUNTING



SHT-SHRT-INT-1LUM-4.72IN-XX*
Shot 180/290/380 Short Intermediate Pole Mount
Single Luminaire
Fits ø3.15" to 4.72" Pole
Anthracite or Grey Finish

.....

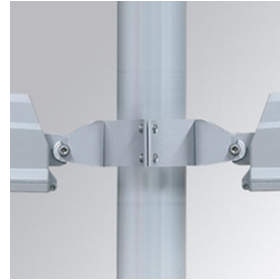


SHT-LNG-INT-1LUM-4.72IN-XX*
Shot 180/290/380 Long Intermediate Pole Mount
Single Luminaire
Fits ø3.15" to 4.72" Pole
Anthracite or Grey Finish



SHT-SHRT-INT-1LUM-5.31IN-XX*
Shot 180/290/380 Short Intermediate Pole Mount
Single Luminaire
Fits ø2.36" to 5.31" Pole
Anthracite or Grey Finish

.....



SHT-SHRT-INT-1LUM-5.12IN-XX*
Shot 180/290/380 Intermediate Pole Mount
Single Luminaire
Fits ø4.72" to 5.12" Pole
Anthracite or Grey Finish

SHT-SHRT-INT-2LUM-5.12IN-XX*
Shot 180/290/380 Intermediate Pole Mount
Twin Luminaires
Fits ø4.72" to 5.12" Pole
Anthracite or Grey Finish

.....

Installation instructions available on request.

MOUNTING ACCESSORIES

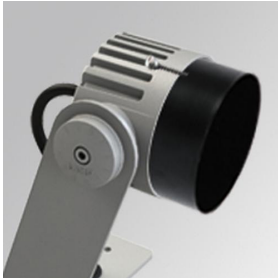
-XX* indicates a painted accessory. Select "AG" for Anthracite or "GR" for Grey. Custom RAL colors are available on request.

WALL MOUNTING



SHT-WALL-1LUM-XX*
Shot 180/290/380 Wall Mount
Single Luminaires
Anthracite or Grey Finish

OPTICAL ACCESSORIES



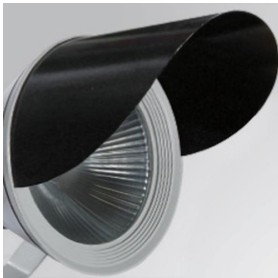
SHT80-SNOOT
Snoot for Shot 80
Matte Black Finish

.....



SHT180-SNOOT
Snoot for Shot 180
Matte Black Finish

.....



SHT290-VISOR
Visor for Shot 290
Matte Black Finish



SHT380-VISOR
Visor for Shot 380
Matte Black Finish

Installation instructions available on request.